



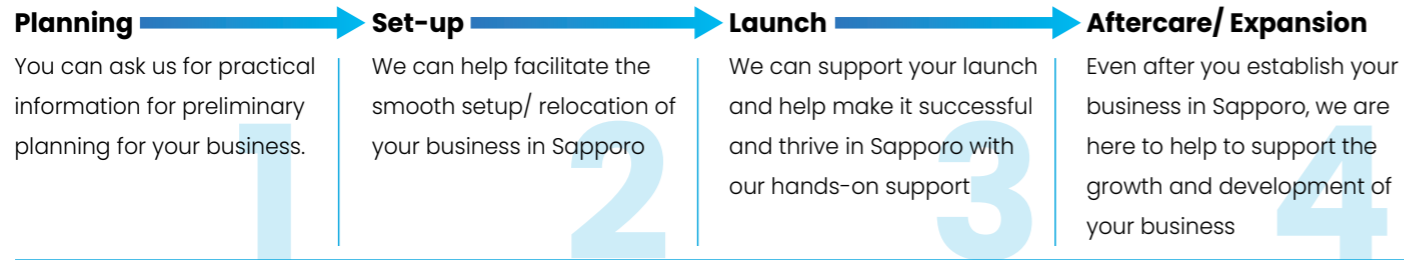
5 Support for Foreign Companies



We can help you navigate a new business environment, discover endless opportunities and let your business thrive in Sapporo. Our wide ranging service includes visa application support, office and accommodation search and business matching with leading local companies, designed to drive innovation and growth - free of charge.

What We Can Do For You

We offer a wide range of hands-on customized services, free of charge, for any business stage you are in.



Subsidies for Corporate Installations

Various assistance programs are available to help you expand your business in Sapporo.

Setting Up Back Offices	Rent max.100 million yen (\$714K)
IT, Digital Content and Biotechnology companies setting up	Rent max.100 million yen (\$714K)
Capital Investment in the Sapporo Area	In Sapporo max.1 billion yen (\$7.14M) Out of Sapporo max.500 million yen (\$3.57M)
Site Visits to Sapporo <small>(accommodation, transportation within the Sapporo area, and interpreter expenses)</small>	max.500,000 yen (\$3.57K)

(Exchange rate: \$1=140 yen)

Contact Sapporo Transnational Expansion & Partnership (STEP)

Hokkaido Economic Center Floor 2, 2 Chome Kita 1 Jonishi, Chuo Ward, Sapporo, Hokkaido 060-0001, Japan

Opening Hours: 9:00 to 17:00 JST (Except weekends and public holidays)

No parking is available. Please use public transportation.

Email: info@sapporo-step.global



Step up to Sapporo

Business at its peak



1 Where is Sapporo?

Sapporo is the capital city of Hokkaido, Japan's northernmost island. The city has a comprehensive air, sea, and land transportation network. The New Chitose Airport is 37 minutes by JR train from Sapporo. It operates 24/7, enabling late-night air cargo flights, and has international terminals. Sapporo is about one hour by car to the Tomakomai Port, an international hub port, and 1 hour 45 minutes to the Murooran Port.

One of the Leading Markets in Japan

Japan is a huge market, with fourth largest economic scale in the world. Sapporo is the fifth most populous city in Japan. 48% of Hokkaido's population is concentrated in Sapporo, forming a metropolitan area of 2.5 million people.



Population of Sapporo

1	Tokyo	9.73 million
2	Yokohama	3.77 million
3	Osaka	2.75 million
4	Nagoya	2.33 million
5	Sapporo	1.97 million

[Source] National Census 2020

GDP
20 Trillion Yen / 8th in Japan
 (14 Million Dollars for Hokkaido region) (as of 2019)

International Flights

Direct international flights are increasing, especially to Asia.

New Chitose Airport International Flights	
Seoul	58 flights/week everyday
Taipei	24 flights/week everyday
Shanghai	14 flights/week everyday
Hong Kong	12 flights/week everyday
Bangkok	12 flights/week everyday
Singapore	4 flights/week

(as of June 2023)
 Tokyo Haneda airport is approx. 1.5 hours away. 55 daily flights, the most frequent in Japan.

Marine Transportation

Sapporo is surrounded by hub ports with excellent access, such as Murooran Port and Tomakomai Port, which are international hub ports, and Ishikari Bay New Port and Otaru Port, which were selected as hub ports on the Sea of Japan side.

The Most Attractive City in Japan

Sapporo is regarded as the most attractive city in Japan. The city has well-developed urban functions, yet is rich in nature and has delicious food. These are Sapporo's selling points.

Municipal Attractiveness Ranking

1	Sapporo	/ 63.9pt
2	Kyoto	/ 59.5pt
3	Hakodate	/ 58.7pt

[Source] "Regional Brand Survey 2022," Brand Research Institute, Inc.



2 Industry

Sapporo is actively trying to attract advanced foreign industries to the city, focusing on the renewable energy, semiconductor, and IT fields as strategic priorities.

The wider Hokkaido region has the highest potential for renewable energy in Japan. A national initiative aims to establish the region as a hub for renewable energy within Japan. Designated by the government, Sapporo aims to attract funds, talent, and knowledge related to green industries from around the world, as a global financial center.

Strategic Industries



IT

Sapporo is one of the nation's leading IT industry clusters, attracting numerous venture companies and IT companies.

The city promotes initiatives aimed at creating innovation and building an ecosystem through the use of advanced technologies such as AI and integrating them with other fields, in collaboration with industry, academia and government.



Environment & Energy

Hokkaido possesses Japan's highest potential for renewable energy, and aims to reach its goal of carbon neutrality by 2050.

Sapporo is taking a proactive approach to decarbonization, balancing efforts to achieve net-zero and economic activities in order to build a green industrial supply chain as a sustainable city.



Semiconductor

Rapidus Corporation in Chitose City plan to produce next-generation semiconductors of 2-nanometer from 2027. They have entered into a joint development partnership with IBM. Their production is expected attract many semiconductor-related companies.

Due to the concentration of universities and enterprises, many design companies for advanced semiconductor are based in Sapporo.

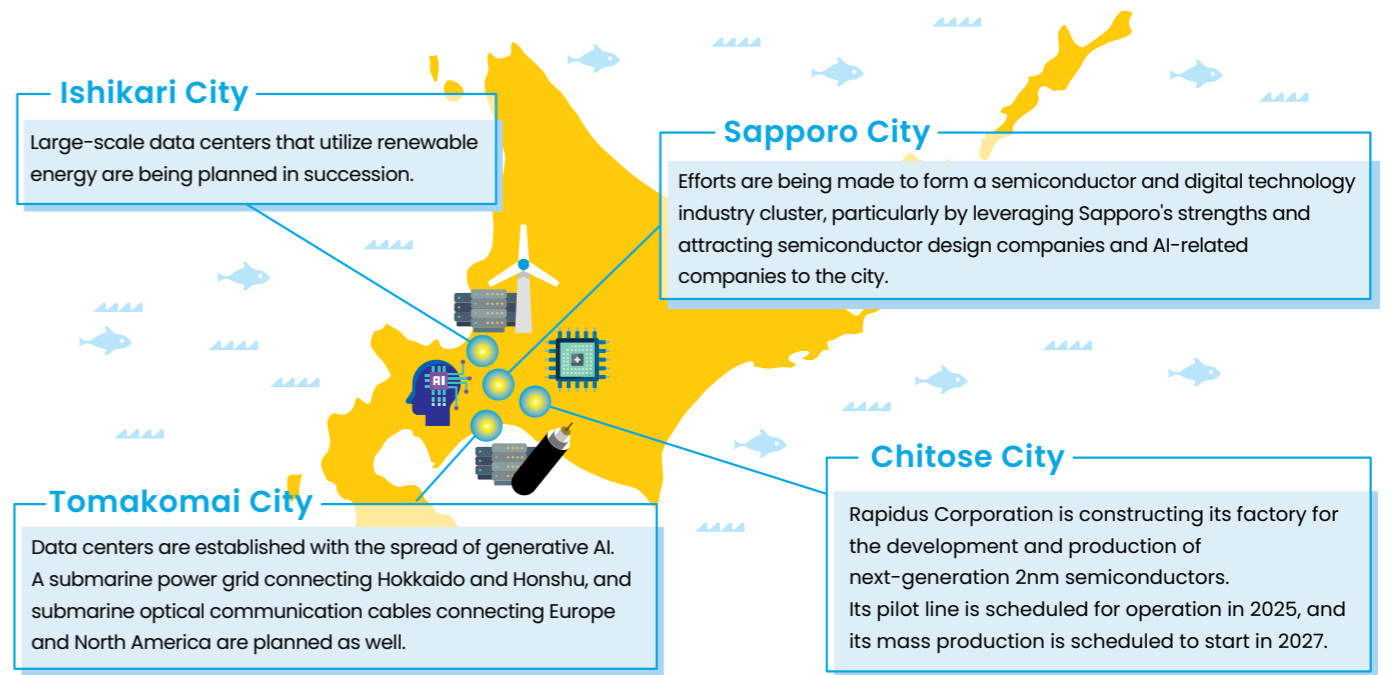
Startups

Sapporo is focusing on creating and fostering startup companies. The city established the "STARTUP HOKKAIDO Executive Committee", the public-private-academic consortium, to promote support for startups through an all-Hokkaido structure. The committee will focus on three industrial fields; Primary Industry and Food, Space Industry, and Environment & Energy, that leverage Hokkaido's unique strengths.



All-Hokkaido Organization Support for startups

Overview of the Industries



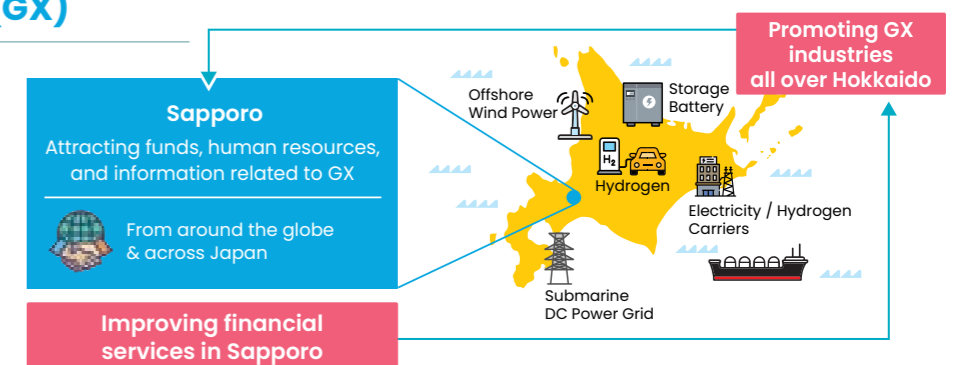
Well-developed Educational and Research Institutions

Universities with high technological capabilities are working together to promote industry-academia-government collaboration and joint research. Every year, a large number of highly-skilled human resources are produced from the universities and technical colleges in Hokkaido.



Special Zone for Financial and Asset Management Businesses specialized in Green Transformation (GX)

Our vision to utilize the policies of National Strategic Special Zone & Special Zone for GX, financial and asset management businesses



To become the Japan's renewable energy hub and the financial center for Asia and beyond.

* Green transformation (GX): transition from a carbon-based economy to a renewable energy-based economy.

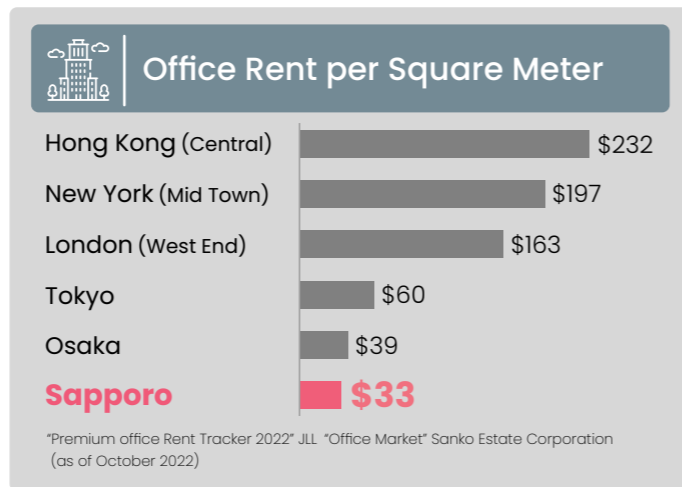


3 Affordable Costs

Despite being a large city, business costs are lower than in other metropolitan areas, allowing for cost-efficient business.

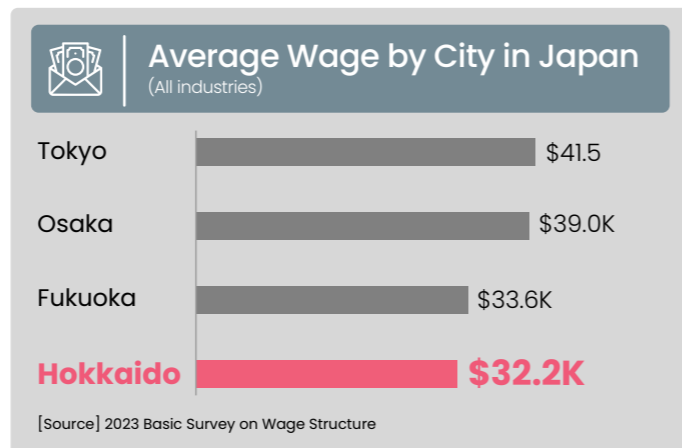
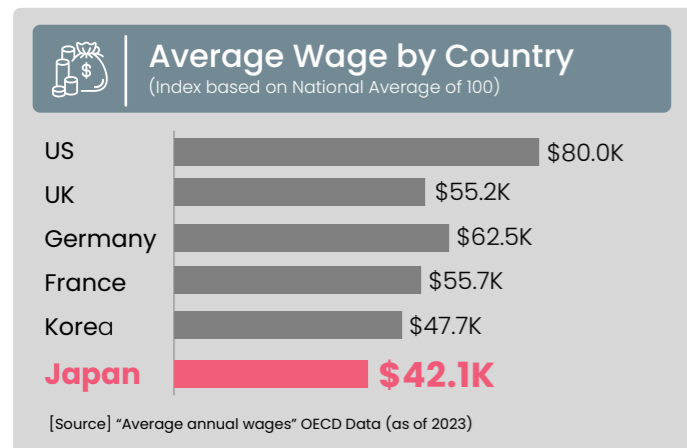
Office Rents

Japanese office rents are relatively low compared to rents in other countries. Rents in Sapporo are lower than in other cities in Japan, and about half of those in Tokyo. A wide variety of office space is available, including Business Continuity Plan (BCP)-compliant buildings and buildings directly connected to the underground pedestrian walkway.



Average Wage

Average wages in Japan are lower than in other countries, making it possible to secure good human resources at a reasonable cost.



(Exchange rate: \$1=140 yen)

4 High Availability of Human Resources



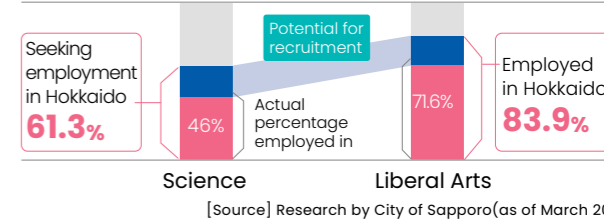
Half of Hokkaido's higher education institutions are concentrated in the Sapporo area, resulting in an abundance of excellent human resources. The high preference for local employment and a low ratio of job offers to applicants makes it easy to attract skilled employees.



Strong Local Employment Orientation

"I want to work locally!"
People in Hokkaido have a strong preference for local employment. However, in reality, there are many whose wishes are not being fulfilled, and this gap is a potential for recruitment.

University students in the city who wish to find a job in Hokkaido



High Supply of Human Resources

48% of Hokkaido's population is concentrated in Sapporo, forming a metropolitan area of 2.5 million.

Population and working-age population of Sapporo Metropolitan area



Clustering of Educational Institutions

Half of Hokkaido's higher education institutions are concentrated in the Sapporo Metropolitan area.

